



CABIN CHRONICLES

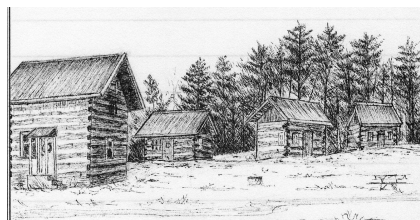
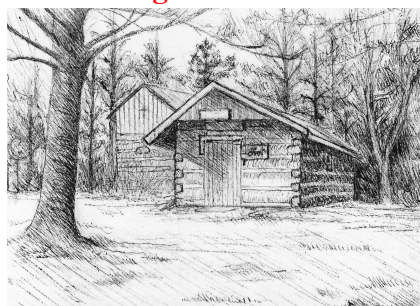
Newsletter of The Reedsburg Area Historical Society Pioneer Log Village

Spring/Summer 2021 Edition

Events 2021:

**Reedsburg Area Historical
Society Chicken BBQ:
Sunday of Memorial Day
Weekend:
May 30th**

**Heritage Day Rendezvous
Fourth Weekend in August:
August 27th-29th**



Artwork by Alex Hewett.



Like us on Facebook
Reedsburg Area
Pioneer Log Village -
Historical Society
Check out our
website!

www.rahspv.com

President's Voice...

Hello, Members and Reedsburg Historical Society Supporters!

We are looking forward to the 2021 season! We hope to be returning to our normal hours of Saturday 11-4 (weather and volunteers depending). We also look forward to returning to normal programming and events. If you are able and willing to help out this year with Saturdays please let us know. Also, if you are able to help out with any of our events please let us know! Thank you everyone for your continued support of the Reedsburg Area Historical Society!

I look forward to seeing you around the village!

Craig Braunschweig, President

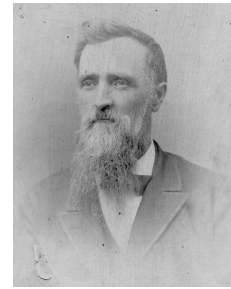
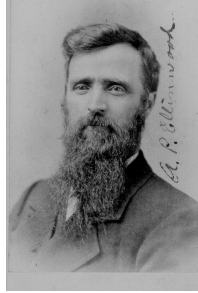
The Phyllis Both Memorial Apothecary Garden

The Apothecary Garden was rededicated in memory of long-time member and gardener, Phyllis Both, who passed away in July 2020. She was an Educator and a leader of the Sauk County Master Gardener for many years and very active at the Log Village. One of Phyllis's last contributions to the village was taking care of the Pioneer Log Village's gardens, being a tour guide grade school tours, and featured on the Discover Wisconsin episode about Reedsburg during the Reedsburg Area Historical Society's Pioneer Log Village's segment.



Alexander Presten Ellinwood

By Craig Braunschweig



Alexander Presten. "A.P." Ellinwood was born September 9th, 1833 in Peterboro, Madison County, New York. Alexander was the son of George W. Ellinwood and Hannah J. Alexander. Ellinwood went to New York Central College, McGrawville, New York where he graduated at the age of sixteen. As a young man of 25, he moved to Reedsburg. He married Hannah Cottington, daughter of Jesse Cottington who introduced hops to the Reedsburg area.

Ellinwood was a teacher, principal in the Reedsburg School System. Ellinwood resigned his position to enlist in the American Civil War. In December of 1861, Ellinwood enlisted in the Northern Army Company A 19th Wisconsin Volunteer Infantry; soon after he was elected the company's 2nd Lieutenant. He saw active duty during the Civil War from February 22, 1862, until the end of the war in 1864. Ellinwood took part in many skirmishes including the Peninsula Campaign and suffered much from malaria fever and the hardships of deprivation during the trials of the war. After the war, A.P. Ellinwood returned to home life in Reedsburg. For more than 40 years he was identified with the Free Masonic order and was active in the work of the Grand Army of the Republic, which was a service group made up of Union Civil War Soldiers a lot like the American Legion or VFW today, was a past commander of H. A. Tator Post located in Reedsburg. He was chairman of the Sauk County Board of Supervisors where he was a member for 20 years or more, Chairman of the village of Reedsburg, Reedsburg's second mayor, and then a member of the Wisconsin State Assembly in 1877 and 1878 as a Republican. He owned over 300 acres of land on Reedsburg's westside, including an area (because of its' wet conditions) known as "Ellinwood's Frog Pond". Ellinwood created the Reedsburg Fairground that was built-in 1872 that consisted of bleachers and a racetrack.

A.P. Ellinwood died on 06 February 1900. His body was escorted to the grave by many of his comrades of the 19th regiment, six of whom acted as pallbearers. Many comrades of his company were present, as well as members of H. A. Tator Post, Grand Army of the Republic, and of the Woman's Relief Corps, and a large concourse of friends.

**Reedsburg Area
Historical Society Board
of Directors:**

President:

Craig Braunschweig

Vice President:

Andy Van Sickle

Treasurer:

Lou Kirt

Secretary:

Carrie Hanson

At Large:

Tammy Werner

Becky Hovde

Terry Kruger

Edith Laridean

Lavern Penberthy

Scott Anderson

Pam Tourdot



Rotary Club donated \$2,400 and artifacts from their collection to the Reedsburg Area Historical Society. Rotary has been a long time supporter of the Reedsburg Area Historical Society. Pictured: Joel Groskreutz, President Rotary Club of Reedsburg, Craig Braunschweig, President Reedsburg Area Historical Society, and Lou Kirt Treasurer Reedsburg Area Historical Society.

REEDSBURG AREA HISTORICAL SOCIETY

Annual Log Village fundraiser **Chicken Barbecue**

Grilled the old fashioned way by the famous "KC's" Serving begins at 11am - SOLD OUT 1500 Meals Will be Served

1/2 Chicken Dinner - \$12

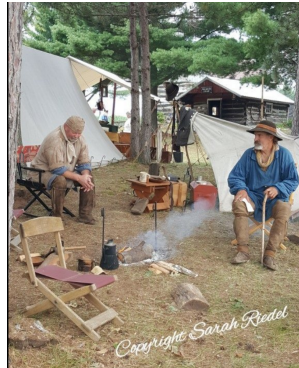
If purchasing more than 6 dinners, reservations must be made by May 28t

Call 608-495-3499 or email rahspv@gmail.com

drive thru ONLY

Located 1 miles east of Reedsburg on Hwy 23/33

MAY 30, 2021



Heritage Day Rendezvous

Heritage Day Rendezvous will be held on August 27-29th in 2021. There were about 30 camps in attendance in 2019 (2020 canceled due to COVID-19). Reenactors will dress in traditional clothing and use tools such as cast iron pans for cooking, to show what life was like during that time period. It is a great way to show people how everyday life was run back then. The camps will be spread throughout Pioneer Log Cabin Village for the public to visit the reenactors and ask them questions about life during the 1800s. The event is family-friendly and attendees always take an interest. Andy VanSickle is the event chair, and if you are wanting to be a camper for the event or want to help out, you can contact him at 608-524-4245.

How to become a member!

Memberships run from January to December.

_____ \$15 Individual membership

_____ \$25 Family Membership

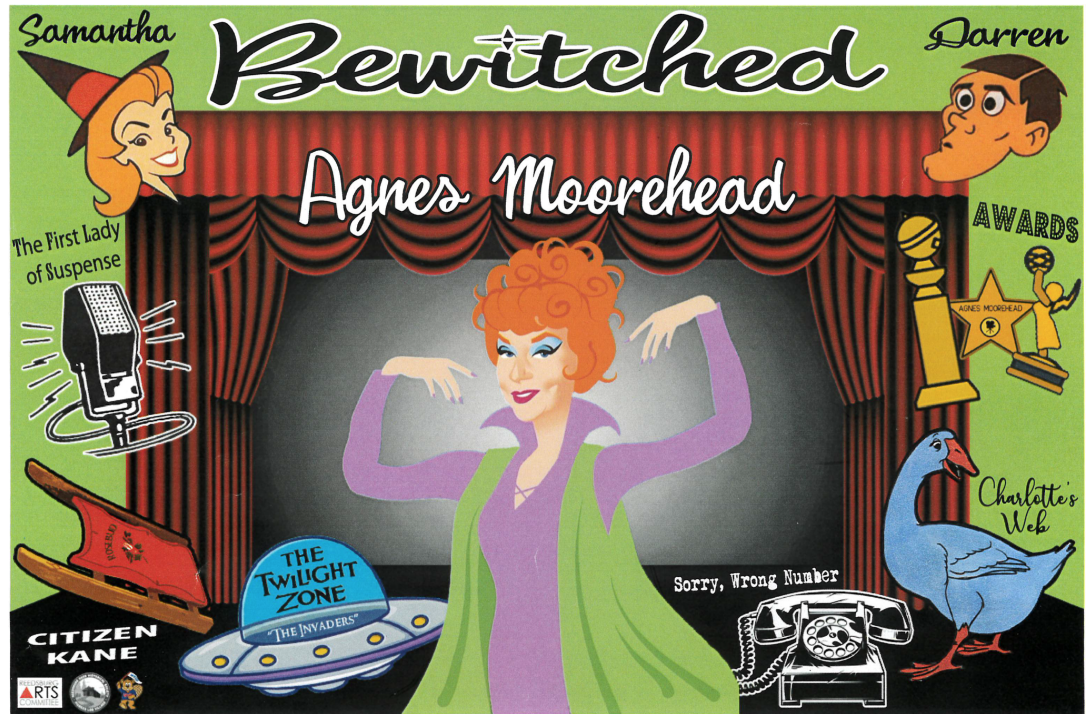
_____ \$50 Non-Profit Membership

_____ \$100 Business Membership

_____ \$250 Lifetime Membership

For information about becoming a member please contact us at rahspv@gmail.com or call 608-495-3499.

The Reedsburg Area Historical Society is teaming up with the Reedsburg Art's Committee, Reedsburg Historical Preservation, and Webb Middle School 8th grade art class to create this historical mural about Famous Reedsburg Resident Agnes Moorehead. The mural will be displayed behind Beastro & Barley (used to be Touchdown Tavern) in downtown Reedsburg.



If you are looking to donate an item please contact Andy Van Sickle at 608-524-4245.

New at the Village

Celebrate special times with family and friends at the **Pioneer Log Village**

A unique and charming destination in south central Wisconsin.
Now available for your family gatherings, reunions, weddings, or other group gatherings.

Reserve the restored 1873 **Willow Church** for your ceremony, a nondenominational log church with beautifully appointed altar and décor and a 150 year old Asbury reed organ;

And new this year: a large **Picnic Shelter** with ample electric outlets and lights, buffet shelf, hot/cold water, modern restrooms, and ADA accessible.

To reserve or request pricing information, please call Craig Braunschweig 608-415-7870 or email us at rahspv@gmail.com